

3-Phase Series

for Delta & Wye Connections



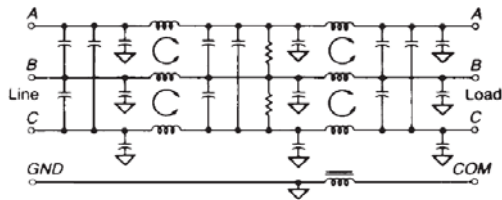
UL File No. E62459 (All Models)
 CSA File No. LR49272 (All Models)
 TUV File No. R70157 (All Models except 60A)



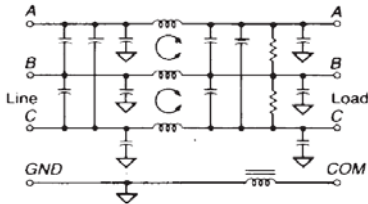
Applications

The 3-phase filters are designed to reduce interference in equipment with balanced or unbalanced loads. Wye and Delta designs satisfy the connection requirements of these power distribution systems. In addition, L and T circuit configurations are provided for high- and low-impedance loads. A 100μH inductor is included in the ground circuit to provide ground current isolation.

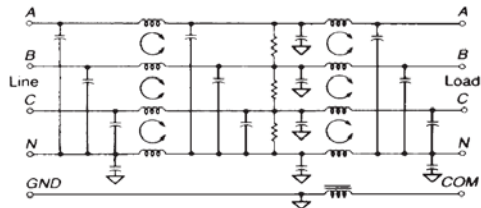
Electrical Schematic (Delta Circuit A)



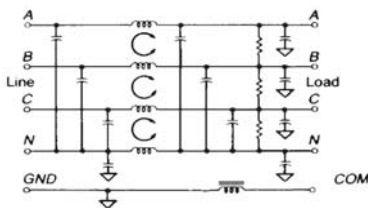
Electrical Schematic (Delta Circuit B)



Electrical Schematic (Wye Circuit A)



Electrical Schematic (Wye Circuit B)



Specifications

Voltage rating: 250/440 VAC (Y Series)
 250 VAC (D Series)

Line frequency: 50/60 Hz

Leakage current:* 2.00μA maximum at 115 V, 60 Hz
 (line-to-ground)
 5.00μA maximum at 250 V, 50 Hz

Test voltage: Line to ground, 2250 VDC
 Line to line, 1450 VDC

Common Mode

Current Rating	Model Number	Frequency (MHz)				
		.15	.2	.5	10	20
20	D20A	35	43	55	60	50 (dB)
	D20B	20	25	40	45	45 (dB)
	Y20A	35	43	55	55	50 (dB)
	Y20B	20	25	40	45	45 (dB)
30	D30A	20	28	55	60	50 (dB)
	D30B	10	13	28	45	45 (dB)
	Y30A	23	30	55	55	50 (dB)
	Y30B	10	13	28	45	40 (dB)
60	D60A	8	15	40	60	50 (dB)
	D60B	3	6	18	45	40 (dB)
	Y60A	6	12	40	60	50 (dB)
	Y60B	4	7	20	45	40 (dB)

Minimum Insertion loss in 50 ohm system per MIL-STD-220A

How to define a part number:

D
 D=Delta
 Y = Wye

20
 Current Rating

A
 Electrical Schematic

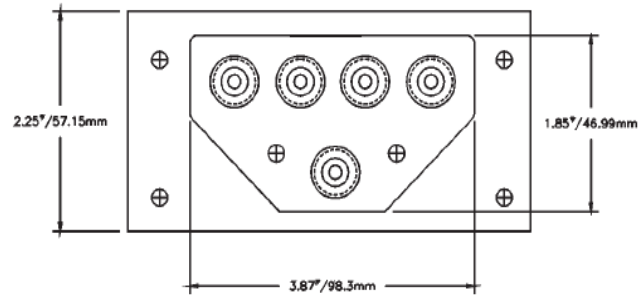
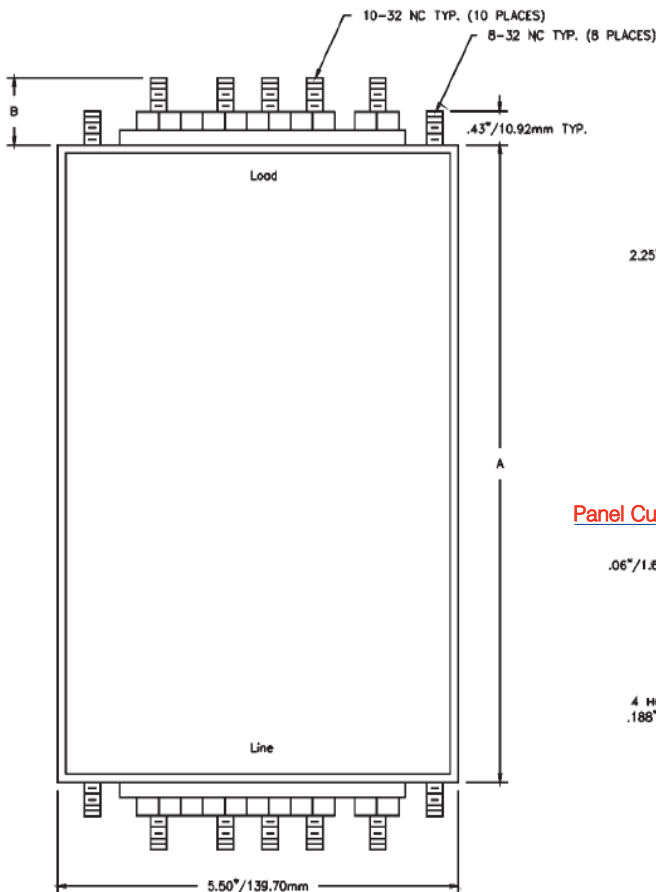
3-Phase Series

Ordering Information

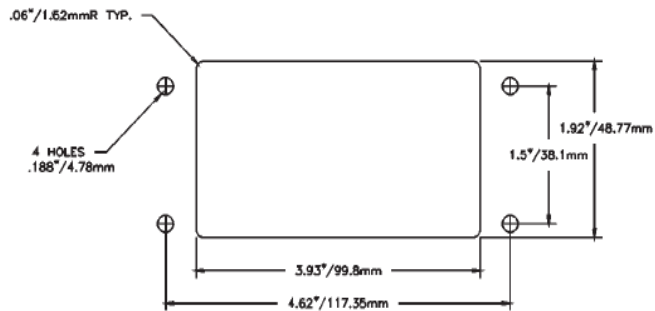
Current Rating	Part Number	Dimensions (mm)	
		A	B
20	D20A	241.30	24.13
	D20B	165.10	24.13
	Y20A	241.30	24.13
	Y20B	165.10	24.13
30	D30A	241.30	24.13
	D30B	165.10	24.13
	Y30A	241.30	24.13
	Y30B	165.10	24.13
60	D60A	241.30	24.13
	D60B	165.10	24.13
	Y60A	241.30	24.13
	Y60B	165.10	24.13

Wye Circuit Filters may be used on 220/440 VAC Delta Systems.
 All units may be used on 400Hz Systems
 All Mounting studs are 8/32 NC

Case Dimensions



Panel Cutout:



Maximum Torque

6-32 Screw = 9 lb.-in. max torque
 8-32 Screw = 14 lb.-in. max torque
 10-32 Screw = 18 lb.-in. max torque