

# CCA Series

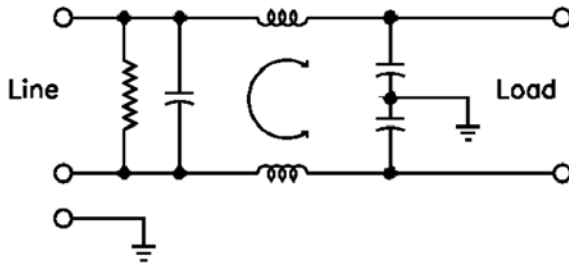
IEC-320 C14 Inlet High Performance Line Filters  
1-6 Amp Panel Mount Snap-In Package



## Applications

The CCA series high-performance connector filters offer the same attenuation as our HPC series in a convenient snap-in mounting package. The filters utilize IEC power connectors, and provide protection from line-to-line and ground-to-line interference.

## Electrical Schematic



## How to define a part number:

**CC** Series      **A** Case Style      **1** Current Rating

## Specifications

**Voltage rating:** 115/250 VAC  
**Line frequency:** 50/60 Hz  
**Leakage current:** 0.25 mA maximum at 115 V, 60 Hz (line-to-ground\*)  
 0.50 mA maximum at 250 V, 50 Hz  
**Test voltage:** Line to ground, 2250 VDC  
 Line to line, 1450 VDC

## Common Mode

Current Rating	Frequency (MHz)							
	0.15	0.2	0.5	1	5	10	20	30
1 A	24	30	38	42	49	52	55	55 (db)
3 A	20	26	29	36	45	50	55	55 (db)
6 A	14	19	23	30	41	45	50	50 (db)

## Differential Mode

Current Rating	Frequency (MHz)							
	0.15	0.2	0.5	1	5	10	20	30
1 A	3	10	15	20	37	37	37	36 (db)
3 A	3	10	15	20	37	37	37	36 (b)
6 A	3	8	15	20	31	35	35	34 (db)

Minimum Insertion Loss in 50 ohm System per MIL-STD-220A

# CCA Series

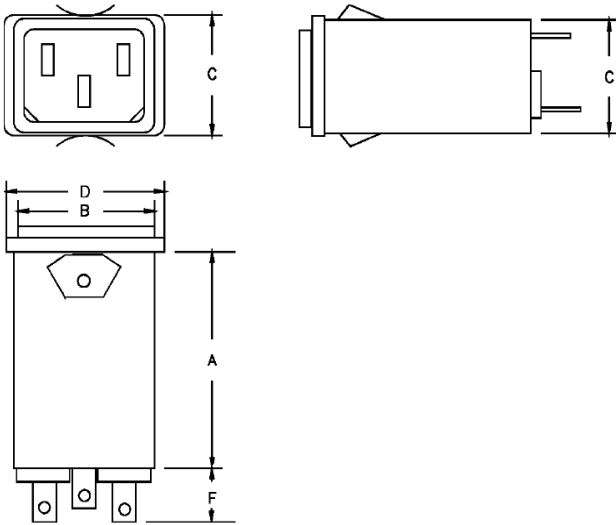
## Ordering Information

Current Rating	Part Number	Dimensions (mm)			
		A	B	C	D
1A	CCA-1	39.37	28.4	21.3	33.5
3A	CCA-3	39.37	28.4	21.3	33.5
6A	CCA-6	39.37	28.4	21.3	33.5

For small Solder Lug Terminations add suffix "L"; e.g. CCA-1L.

F Dimensions for 0.250 Tab Terminals extend 14.73mm, smaller Solder Lug Termination extend 11.43mm. Solder Lug Hole Diameter is 1.98mm.

## CASE STYLE:



## PANEL CUT-OUT:

