

FCF Series

IEC-320 C14 Inlet Line Filter with Fuse
1-6 Amp Panel Mount Package



UL File No. E62459
CSA File No. LR56661
VDE File No. 41801

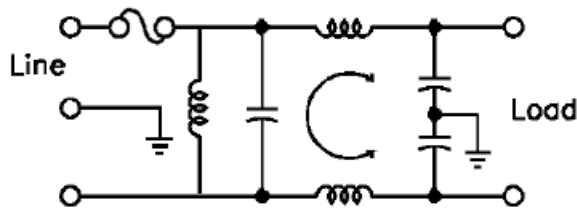


Applications

SAE Power's fused connector filters (FCF series) feature an IEC power input receptacle. This installation eliminates virtually all interference coupling around the filter. In addition, the series accepts a 5 x 20-mm fuse for circuit protection, and is rated at 1, 2, 3, 4 or 6 amps.

The FCF series is suitable for all types of electronic equipment. The EMI filter at the power source maximizes electromagnetic interference suppression and eliminates the need for wiring a separate filter to a power receptacle, lowering the cost and improving the installation performance.

Electrical Schematic



How to define a part number:



Specifications

Voltage rating:	115/250 VAC
Line frequency:	50/60 Hz
Leakage current: (line-to-ground*)	0.50 mA maximum at 115 V, 60 Hz 1.25 mA maximum at 250 V, 50 Hz
Test voltage:	Line to ground, 2250 VDC Line to line, 1450 VDC
Current Overload:	Tested at 6x rated current for 8 secs.
Insulation:	6 megaohms at 100VDC Resistance

Common Mode

Current t Rating	Frequency (MHz)									
	0.1	0.2	0.5	0.15	0.5	1	5	10	20	30
1 A	20	24	30	40	50	60	60	60	50	50 (db)
2 A	10	15	25	35	43	50	55	55	55	50 (db)
3 A	5	10	20	30	35	45	55	60	50	50 (db)
4 A	4	8	15	25	30	40	50	56	50	50 (db)
6 A	3	6	10	18	25	35	45	50	50	50 (db)

Differential Mode

Current t Rating	Frequency (MHz)									
	0.1	0.2	0.5	0.15	0.5	1	5	10	20	30
1 A	1	1	1	3	14	23	50	46	44	44 (db)
2 A	1	1	1	2	12	20	45	43	42	42 (db)
3 A	1	1	1	2	11	14	44	42	40	40 (db)
4 A	1	1	1	2	10	14	40	40	40	40 (db)
6 A	1	1	1	2	10	13	39	40	42	42 (db)

FCF Series

Ordering Information

Current Rating	0.25" Tab Models	0.45 Solder Tab Models	Dimensions (mm)				
			A	B	C	D	E
1A	FCF1-1	FCF2-1	50.80	28.58	31.75	33.07	43.18
2A	FCF1-2	FCF2-2	50.80	28.58	31.75	33.07	43.18
3A	FCF1-3	FCF2-2	50.80	28.58	31.75	33.07	43.18
4A	FCF1-4	FCF2-2	50.80	28.58	31.75	33.07	43.18
6A	FCF1-6	FCF2-2	50.80	28.58	31.75	33.07	43.18

Termination Options:

FCF1-# Models = 0.25" Tab Terminals (14.73mm length)
 FCF2-# Models = 0.45 Solder Tabs (11.43mm length)

CASE STYLE:

