

HP Series

High Performance General Application Line Filter



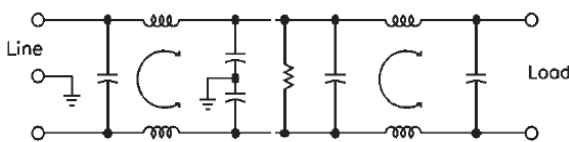
UL File No. E62459 (All Models)
 CSA File No. LR49272 (All Models)
 TUV File # R30001 (All models except 20 & 30 Amp models)
 VDE File # 27905 (All models except HP7 & HP8 models)



Applications

The high-performance filters provide high attenuation for low impedance loads, such as motors and switching power supplies. They are intended for use in severe EMI environments. These filters are designed to help meet the new IEC requirements where conducted emissions from the equipment to the power line must be further suppressed.

Electrical Schematic



How to define a part number:

HP
Series

1
Case
Style

-

1
Current
Rating

Specifications

Voltage rating: 115/250 VAC
Line frequency: 50/60 Hz
Leakage current:* 0.50 mA maximum at 115 V, 60 Hz
 (line-to-ground) 1.00 mA maximum at 250 V, 50 Hz
Test voltage: Line to ground, 2250 VDC
 Line to line, 1450 VDC

* Low leakage current models (<0.5mA@250VAC / 50Hz) may be ordered by adding the prefix "L", e.g. lhp1-1. These units offer 6dB lower insertion loss.

Common Mode

Current Rating	Frequency (MHz)						
	.15	.5	1	5	10	20	30
1, 2, 3 & 5 A	30	65	65	65	65	65	65 (dB)
10 A	20	44	60	65	65	60	60 (dB)
20 A	10	44	55	65	65	60	55 (dB)
30 A	8	44	55	65	65	60	55 (dB)

Differential

Current Rating	Frequency (MHz)						
	.15	.5	1	5	10	20	30
1, 2, 3 & 5 A	9	30	65	60	55	50	45 (dB)
10 A	9	10	35	60	55	50	45 (dB)
20 A	9	10	35	60	55	50	45 (dB)
30 A	9	10	35	60	55	50	45 (dB)

Minimum Insertion loss in 50 ohm system per MIL-STD-220A

HP Series

Ordering Information

Current Rating	Part Number	Dimensions (mm)				
		A	B	C	D	E
1	HP1-1	50.8	44.45	28.7	60.45	69.85
	HP2-1	50.8	44.45	28.7	60.45	69.85
	HP3-1	50.8	44.45	28.7	60.45	69.85
2	HP1-2	50.8	44.45	28.7	60.45	69.85
	HP2-2	50.8	44.45	28.7	60.45	69.85
	HP3-2	50.8	44.45	28.7	60.45	69.85
3	HP1-3	50.8	44.45	28.7	60.45	69.85
	HP2-3	50.8	44.45	28.7	60.45	69.85
	HP3-3	50.8	44.45	28.7	60.45	69.85
	HP1-3L	63.5	50.8	28.7	74.68	84.32
	HP2-3L	63.5	50.8	28.7	74.68	84.32
	HP3-3L	63.5	50.8	28.7	74.68	84.32
	HP7-3*	63.5	50.8	31.75	40.0	16.0
HP8-3*	63.5	50.8	31.75	40.0	16.0	

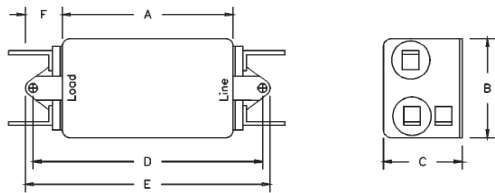
Ordering Information

Current Rating	Part Number	Dimensions (mm)				
		A	B	C	D	E
5	HP1-5	63.5	50.8	28.7	60.45	84.32
	HP2-5	63.5	50.8	28.7	74.68	84.32
	HP3-5	63.5	50.8	28.7	74.68	84.32
	HP7-5*	63.5	50.8	31.75	40.0	16.0
	HP8-5*	63.5	50.8	31.75	40.0	16.0
10	HP1-10	63.5	50.8	38.1	60.45	84.32
	HP2-10	63.5	50.8	38.1	74.68	84.32
	HP3-10	63.5	50.8	38.1	74.68	84.32
	HP4-10	63.5	50.8	38.1	74.68	84.32
	HP7-10*	82.55	50.8	38.1	40.0	16.0
20	HP8-10*	82.55	50.8	38.1	40.0	16.0
	HP1-20**	98.55	84.07	38.1	95.25	104.65
30	HP5-20	98.55	84.07	38.1	95.25	104.65
	HP6-30	133.35	76.2	76.2	143.0	152.15

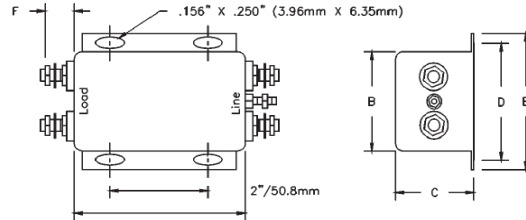
0.250 Tab Terminals extend 14.73mm. 18-Gauge wire leads extend 107.95mm. 8-32 x 0.675 threaded Terminals extend 26.5mm maximum Mounting Hole Diameters are 4.78

* To designate metric mounting, add the suffix "M" before the "-", eg: HP7M-10
 **HP1-20 uses style 5 Mounting with fast-on terminals

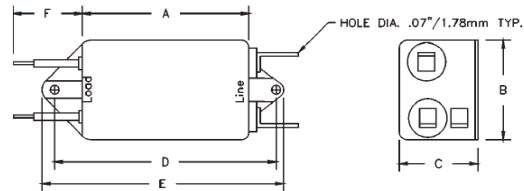
Case Style 1:



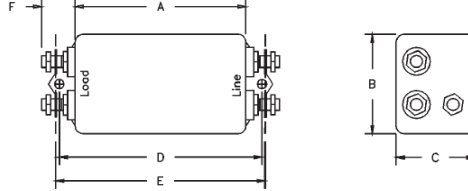
Case Style 5:



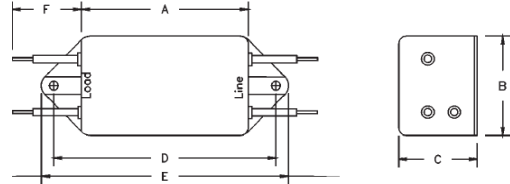
Case Style 2:



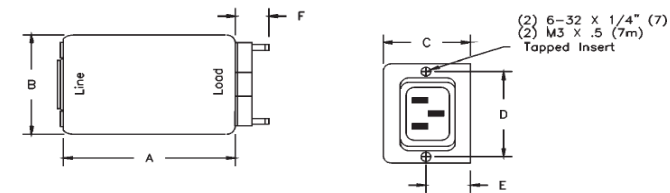
Case Style 6:



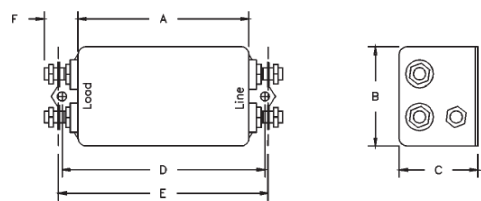
Case Style 3:



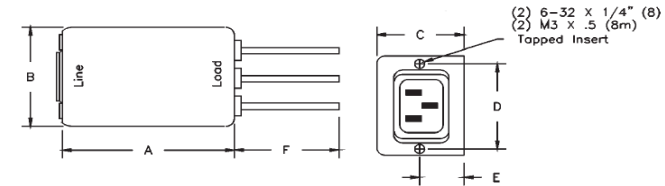
Case Style 7 or 7M:



Case Style 4:



Case Style 8 or 8M:



Panel Cutout:

