

M Series

Medical IEC-320 Line Filters



UL File No. E62459 (Excluding 10 A Models)
 CSA File No. LR49272 (Excluding 10 A Models)
 TÜV File No. R30001 (Excluding 10 A Models)
 VDE File No. 15890 (Excluding 10 A Models)

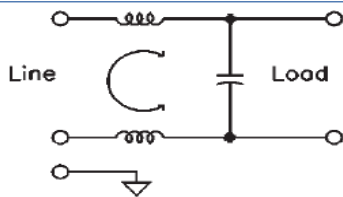


Applications

M series medical filters provide very low leakage current to meet medical and dental equipment requirements of UL 2601 & IEC 601. For non-patient equipment (maximum leakage current of 500 micro amps at 250 VAC).

SAE offers a wide range of line filters with the optional suffix of "L" which designates low leakage and may be considered for use in medical applications.

Electrical Schematic



Specifications

Voltage rating: 115/250 VAC
Line frequency: 50/60 Hz
Leakage current:* 2.00µA maximum at 115 V, 60 Hz
 (line-to-ground) 5.00µA maximum at 250 V, 50 Hz
Test voltage: Line to ground, 2250 VDC
 Line to line, 1450 VDC

Common Mode

Current Rating	Frequency (MHz)							
	.15	.2	.5	1	5	10	20	
1A	15	20	23	25	25	25	20	18 (dB)
3A	12	17	20	23	25	25	20	18 (dB)
6A	9	15	20	23	26	25	20	18 (dB)
10A	10	12	17	20	13	12	10	8 (dB)

Minimum Insertion loss in 50 ohm system per MIL-STD-220A

How to define a part number:

M

Series

6

Current Rating

A

Case Style

M Series

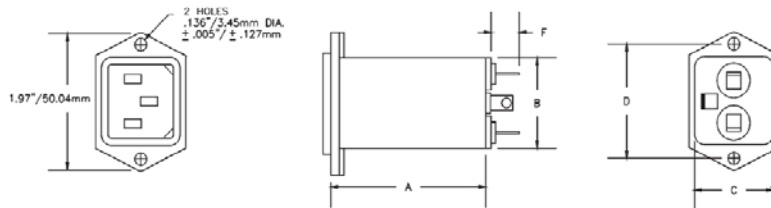
Ordering Information

Current Rating	Part Number	Dimensions (mm)			
		A	B	C	D
1	M1A*	39.37	29.72	20.57	40.00
	M1B*	39.37	29.72	20.57	40.00
	M1C	44.45	22.35	16.00	54.10
3	M3A*	39.37	29.72	20.57	40.00
	M3B*	39.37	29.72	20.57	40.00
	M3C	44.45	22.35	16.00	54.10
6	M6A*	39.37	29.72	20.57	40.00
	M6B*	39.37	29.72	20.57	40.00
	M6C	44.45	22.35	16.00	54.10
10	M10A*	50.80	29.72	20.57	40.00
	M10B*	50.80	29.72	20.57	40.00
	M10C	44.45	31.75	28.70	54.10

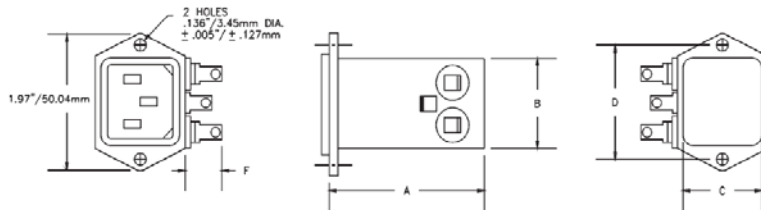
* For small solder lug terminations, add suffix L, e.g., M6AL.
 For 108mm wire leads, add the suffix W, e.g., M6AW.
 Consult Factory for any other termination requirements.

0.250 Tab Terminals extend 14.73mm (max)
 Solder Lug Terminals extend 11.43mm (max)
 Solder Lug Hole Diameter is 1.98mm
 Mounting Hole Diameters are 4.78mm.

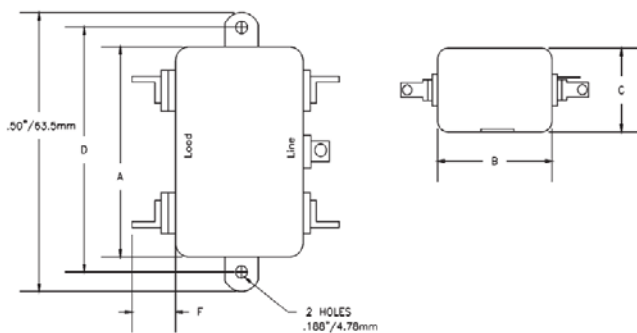
Style A



Style B



Style C



Panel Cutout

