

PM 1 Series

IEC-320 C14 Power Entry Module with
1-6 Amp EMI Line Filters



UL File No. E62459
CSA File No. LR49272
TUV File No. R9310470



Applications

SAE Power's power entry module EMI filters provide the convenience of single-point, snap-in mounting of an IEC connector, a fuse holder with optional power ON/OFF switch and voltage selector switch plus an EMI filter. The fuse holder is designed for one IEC 5x 20mm fuse and one spare. For dual fuse, consult factory.

Specifications

Voltage rating:	115/250 VAC
Line frequency:	50/60 Hz
Leakage current: (line-to-ground*)	0.25 mA maximum at 115 V, 60 Hz 0.50 mA maximum at 250 V, 50 Hz
Test voltage:	Line to ground, 2250 VDC Line to line, 1450 VDC

Figure A

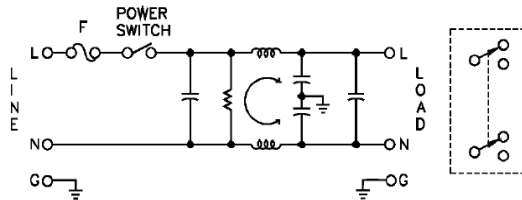


Figure B

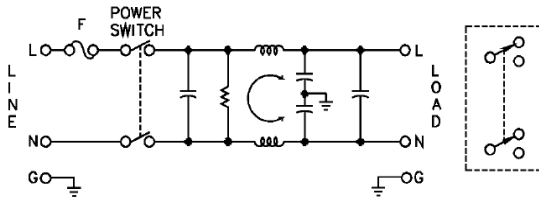
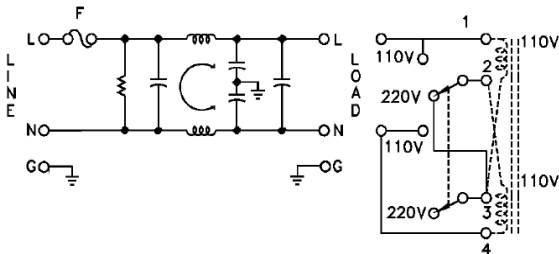


Figure C



Common Mode

Type	Frequency (MHz)						
	0.10	0.15	0.5	1	5	10	30
All	20	24	30	35	45	50	45 (db)

Differential Mode

Type	Frequency (MHz)						
	0.15	0.2	0.5	1	5	10	30
All	8	10	30	45	45	45	40 (db)

Minimum Insertion Loss in 50 Ohm System per MIL-STD-220A

PM 1 Series

Ordering Information

Part Number	Rated Current 125 VAC Operation	Rated Current 250 VAC Operation	Power Switch	Voltage Selector	Schematic Type
PM1A6	6 Amps	6 Amps	-	-	A
PM1B6	6 Amps	6 Amps	Single Pole ⁽¹⁾	-	A
PM1C6	6 Amps	4 Amps	Dual Pole ⁽²⁾	-	B
PM1D6	6 Amps	4 Amps	Single Pole ⁽¹⁾	Rear ⁽³⁾	A
PM1E6	6 Amps	4 Amps	Dual Pole ⁽²⁾	Rear ⁽³⁾	B
PM1F6	6 Amps	4 Amps	-	Rear ⁽³⁾	A
PM1G6	6 Amps	5 Amps	-	Front ⁽⁴⁾	C

Note 1) Single Pole Switch is UL & CSA Approved for 6 Amps @ 125 VAC / 250 VAC, VDE Approved for 6 Amps @ 250 VAC. Max inrush current of 24 Amps.

Note 2) Dual Pole Switch is UL & CSA Approved for 6 Amps @ 125 VAC / 4 Amps @ 250 VAC, VDE Approved for 4 Amps @ 250 VAC. Max inrush current of 51 Amps.

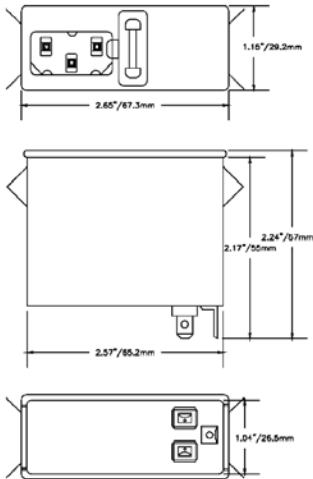
Note 3) Voltage Selector is UL, CSA & VDE Approved for 10 Amps @ 125 VAC and 5 Amps @ 250 VAC.

Note 4) Voltage Selector is UL & CSA Approved for 6 Amps @ 125 VAC / 250 VAC, VDE Approved for 6 Amps @ 250 VAC.

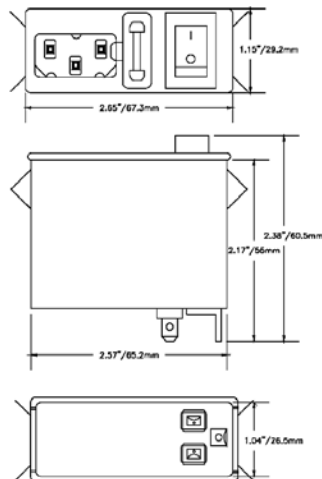
Solder tabs extend 10.92mm (typical).

CASE STYLES:

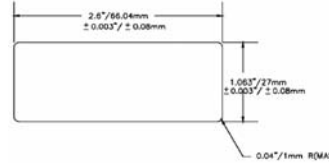
PM1A6



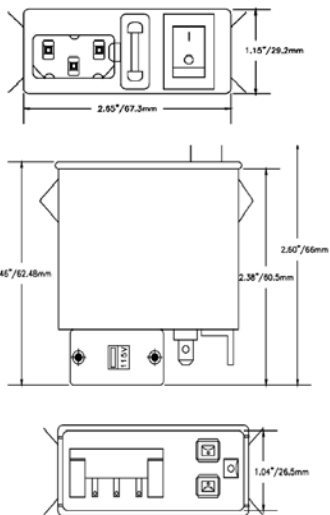
PM1B6 / PM1C6 (switch marking reversed)



Cutout



PM1D6



PM1G6

