

# PM2 Series

IEC-320 C14 Power Entry Module with  
1-6 Amp High Performance EMI Line Filters



UL File No. E62459  
CSA File No. LR49272  
TUV File No. R9310470



## Applications

SAE Power's high performance filtered power modules provide the convenience of single-point, snap-in mounting of an IEC connector, a fuse holder with optional power ON/OFF switch and voltage selector switch plus an EMI filter. These two-stage filters are ideal for applications in which greater low frequency attenuation is desired. For dual fuse, consult factory.

## Electrical Schematics:

Figure A

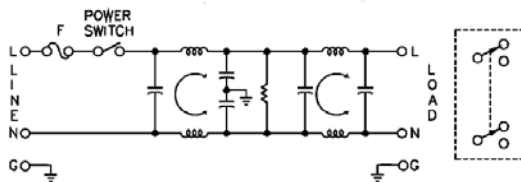


Figure B

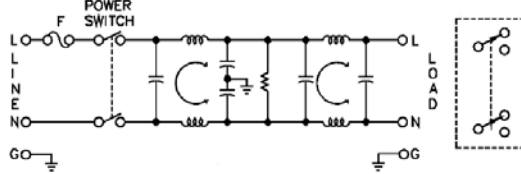
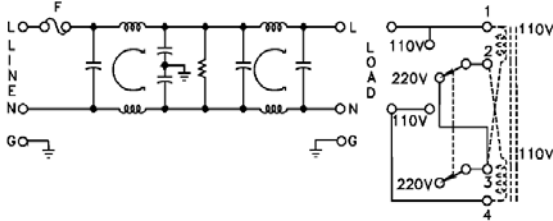


Figure C



## Specifications

<b>Voltage rating:</b>	115/250 VAC
<b>Line frequency:</b>	50/60 Hz
<b>Leakage current:</b> (line-to-ground*)	0.25 mA maximum at 115 V, 60 Hz 0.50 mA maximum at 250 V, 50 Hz
<b>Test voltage:</b>	Line to ground, 2250 VDC Line to line, 1450 VDC

## Common Mode

Type	Frequency (MHz)								
	.01	.05	.10	.15	.50	1.0	5	10	30
All	5	14	20	31	56	62	60	50	35 (db)

## Differential Mode

Type	Frequency (MHz)								
	.01	.05	.10	.15	.50	1.0	5	10	30
All	.5	7	10	9	25	65	60	50	45 (db)

Minimum Insertion Loss in 50 Ohm System per MIL-STD-220A

# PM2 Series

## Ordering Information

Part Number	Rated Current 125 VAC Operation	Rated Current 250 VAC Operation	Power Switch	Voltage Selector	Schematic Type
PM2A6	6 Amps	6 Amps	-	-	A
PM2B6	6 Amps	6 Amps	Single Pole <sup>(1)</sup>	-	A
PM2C6	6 Amps	4 Amps	Dual Pole <sup>(2)</sup>	-	B
PM2D6	6 Amps	5 Amps	Single Pole <sup>(1)</sup>	Rear <sup>(3)</sup>	A
PM2E6	6 Amps	4 Amps	Dual Pole <sup>(2)</sup>	Rear <sup>(3)</sup>	B
PM2F6	6 Amps	5 Amps	-	Rear <sup>(3)</sup>	A
PM2G6	6 Amps	6 Amps	-	Front <sup>(4)</sup>	C

Note 1) Single Pole Switch is UL & CSA Approved for 6 Amps @ 125 VAC / 250 VAC, VDE Approved for 6 Amps @ 250 VAC. Max inrush current of 24 Amps.

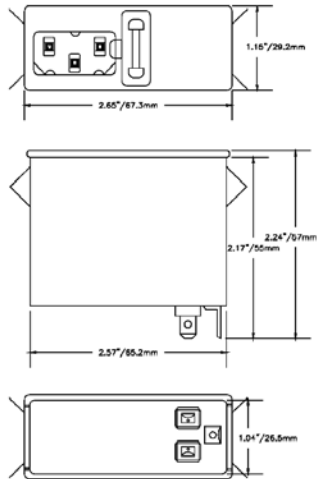
Note 2) Dual Pole Switch is UL & CSA Approved for 6 Amps @ 125 VAC / 4 Amps @ 250 VAC, VDE Approved for 4 Amps @ 250 VAC. Max inrush current of 51 Amps.

Note 3) Voltage Selector is UL, CSA & VDE Approved for 10 Amps @ 125 VAC and 5 Amps @ 250 VAC.

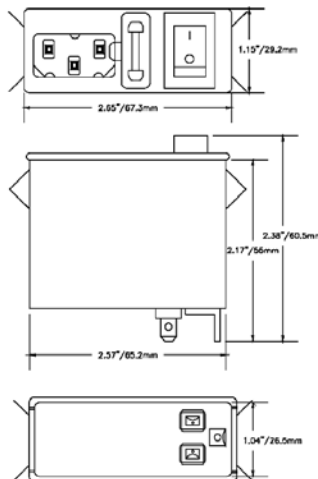
Note 4) Voltage Selector is UL & CSA Approved for 6A @ both 125 VAC / 250 VAC, VDE Approved for 6 Amps @ 250 VAC.

## CASE STYLES:

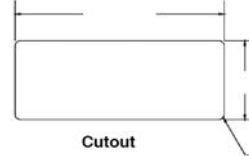
PM2A6



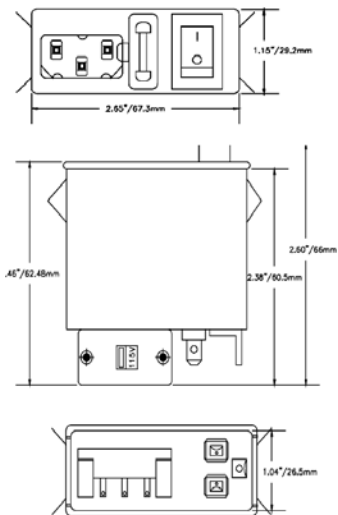
PM2B6 / PM2C6 (switch marking reversed)



Cutout



PM2D6 / PM2E6 (switch marking reversed) / PM2F6 (no switch)



PM2G6

