

PMO Series

IEC-320 C14 Power Entry Module
with Fuse & Switch rated for 6 Amps



UL File No. E107489
CSA File No. LR49272
TUV File No. R9112004



Applications

SAE Power's PMO Series power entry modules provide a plastic case that includes an IEC connector, a fuse holder, an optional power ON/OFF switch and a voltage selector switch in one single easy to mount unit. The fuse holder is designed for one IEC 5 x 20 mm fuse and one spare fuse. Safety interlock prevents fuse removal with line plug inserted. For dual fuse, consult factory..

Specifications

Voltage rating: 115/250 VAC
Line frequency: 50/60 Hz
Leakage current: 0.20 mA maximum at 115 V, 60 Hz
 (line-to-ground*)
 0.50 mA maximum at 250 V, 50 Hz
Test voltage: Line to ground, 2250 VDC
 Line to line, 1450 VDC

Electrical Schematics:

Figure A

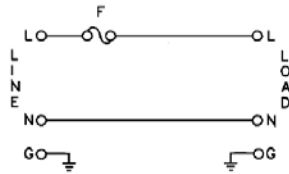


Figure B

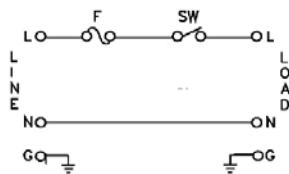


Figure C

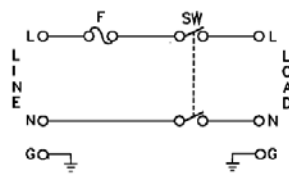
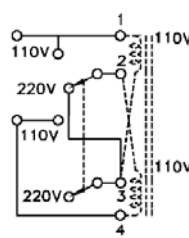
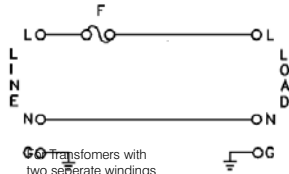


Figure D



How to define a part number:

PMO
Series

A
Schematic
Style

6
Current
Rating

PMO Series

Ordering Information

Part Number	Current Rating (115 VAC Operation)	Current Rating (220 VAC Operation)	Schematic	Switch Type	Voltage Selector
PMOA6	6 Amps	6 Amps	A	-	-
PMOB6	6 Amps	6 Amps	B	Single Pole ⁽¹⁾	-
PMOC6	6 Amps	4 Amps	C	Dual Pole ⁽²⁾	-
PMOD6	6 Amps	6 Amps	D	-	Front ⁽³⁾

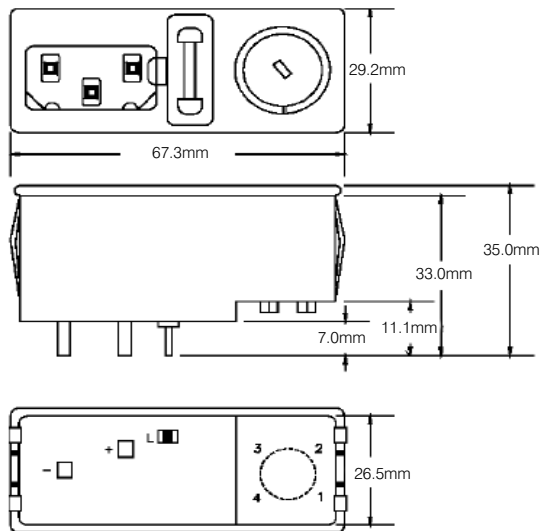
Note 1) Single Pole Switch Models are UL, CSA & VDE Approved to 6 Amps with maximum inrush of 24 Amps. Rated for up to 50,000 cycles

Note 2) Double Pole Switches are UL, CSA & VDE Approved to 6A @ 125 VAC and 4 A @ 250 VAC with a maximum inrush current of 51 Amps. Rated for up to 10,000 cycles.

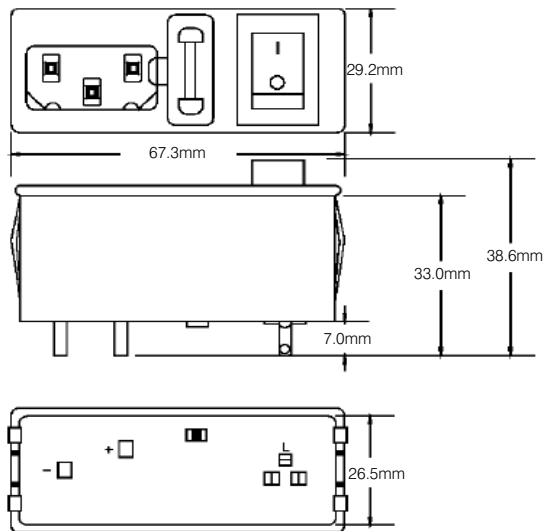
Note 3) Voltage Selector Switch UL, CSA, VDE approved for 6 Amps.

CASE STYLES:

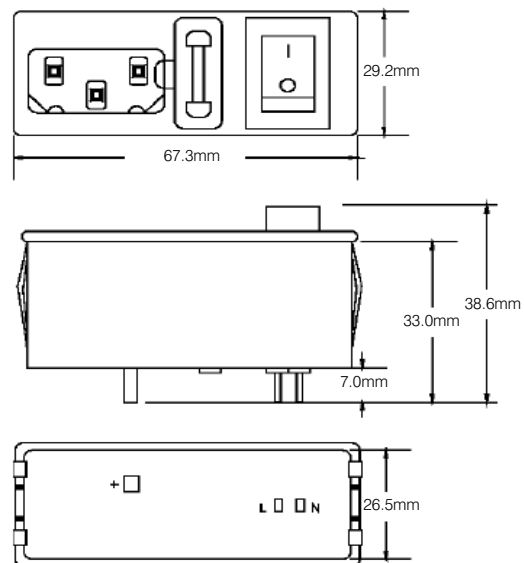
PMOA6 (without Voltage Selector) or PMOD6



PMOB6



PMOC6



Cutout (All Models)

