

PMS Series

Shielded IEC-320 C14 Power Entry Module



UL File No. E107489
 CSA File No. LR49272
 TUV File No. R9112004



Applications

SAE Power's PMS Series power entry modules provide a metal case that includes an IEC connector, a fuse holder, an optional power ON/OFF switch and a voltage selector switch in one single easy to mount unit. The fuse holder is designed for one IEC 5 x 20 mm fuse and one spare fuse. Safety interlock prevents fuse removal with line plug inserted. Useful in applications requiring shielded power entry. For dual fuse, consult factory.

Specifications

Voltage rating:	115/250 VAC
Line frequency:	50/60 Hz
Leakage current: (line-to-ground*)	0.20 mA maximum at 115 V, 60 Hz 0.50 mA maximum at 250 V, 50 Hz
Test voltage:	Line to ground, 2250 VDC Line to line, 1450 VDC

Electrical Schematics:

Figure A

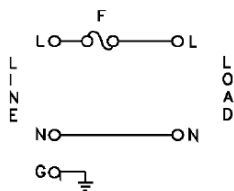


Figure B

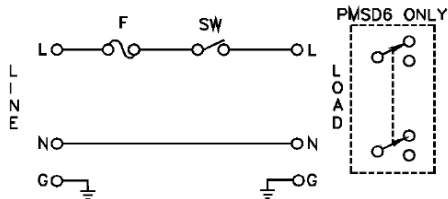


Figure C

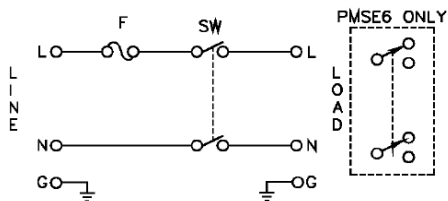
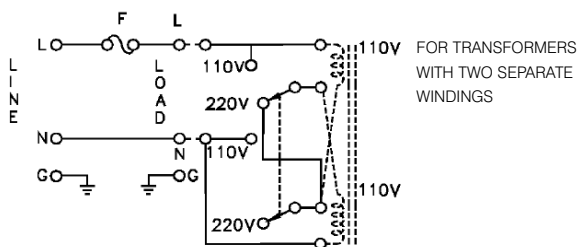


Figure D



PMS Series

Ordering Information

Part Number	Rated Current 125 VAC Operation	Rated Current 250 VAC Operation	Power Switch	Voltage Selector	Schematic Type
PMSA6	6 Amps	6 Amps	-	-	A
PMSB6	6 Amps	6 Amps	Single Pole ⁽¹⁾	-	A
PMSC6	6 Amps	4 Amps	Dual Pole ⁽²⁾	-	B
PMSD6	6 Amps	5 Amps	Single Pole ⁽¹⁾	Rear ⁽³⁾	A
PMSE6	6 Amps	4 Amps	Dual Pole ⁽²⁾	Rear ⁽³⁾	B
PMSF6	6 Amps	6 Amps	-	Front ⁽⁴⁾	A

Note 1) Single Pole Switch is UL & CSA Approved for 6 Amps @ 125 VAC / 250 VAC, VDE Approved for 6 Amps @ 250 VAC. Max inrush current of 24 Amps.

Note 2) Dual Pole Switch is UL & CSA Approved for 6 Amps @ 125 VAC / 4 Amps @ 250 VAC, VDE Approved for 4 Amps @ 250 VAC. Max inrush current of 51 Amps.

Note 3) Voltage Selector is UL, CSA & VDE Approved for 10 Amps @ 125 VAC and 5 Amps @ 250 VAC.

Note 4) Voltage Selector is UL & CSA Approved for 6A @ both 125 VAC / 250 VAC, VDE Approved for 6 Amps @ 250 VAC.

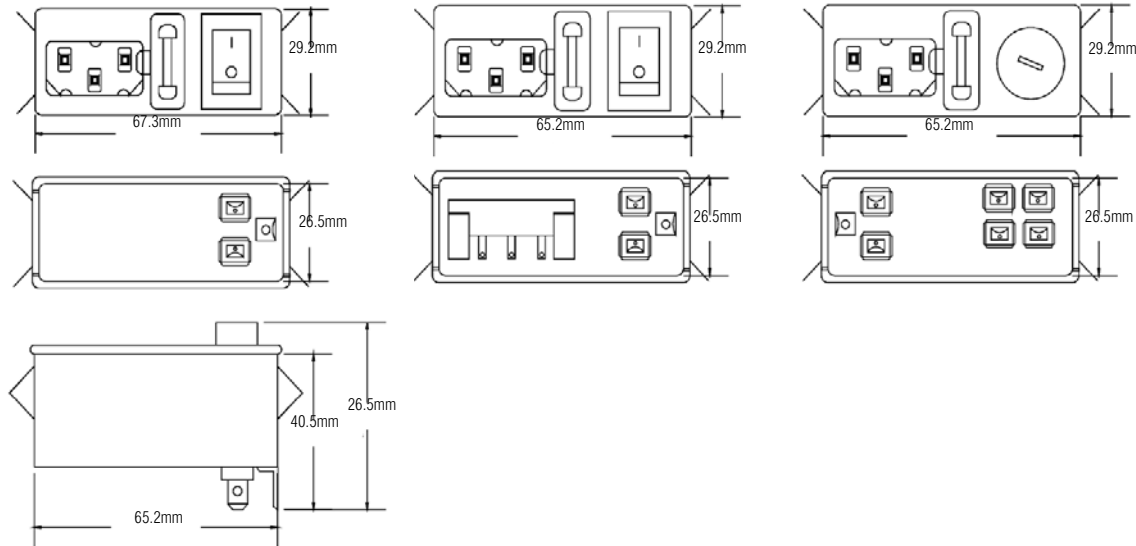
CASE STYLES:

PMSA6 (w/o switch) / PMSB6

PMSC6 (switch marking reversed)

PMSD6 / PMSE6 (switch marking reversed)

PMSF6



Cutout:

