

SPC Series

IEC-320 C14 Inlet Super Performance Line Filters
1-6 Amp Panel Mount Package



UL File No. E62459
CSA File No. LR56661
VDE File No. 51403

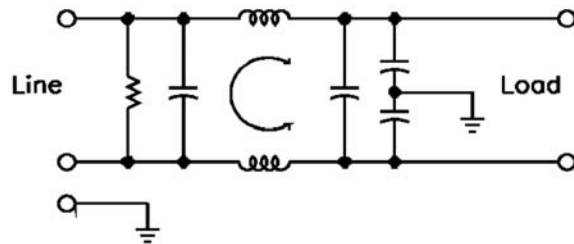


Applications

The SPC series super-performance power line filters give extremely high attenuation of both common and differential mode signals. These filters are an extension of the HPC series high-performance connector filters, having the same circuit with line-to-line capacitors on both line and load side. This enhances the differential mode, while the common mode remains essentially the same. The increased performance is useful in both susceptibility and emission control applications, in which maximum performance is desired.

The series is offered at 1, 3 or 6 amps. The SPC series is suitable for all types of electronic equipment. The EMI filter at the power source maximizes electromagnetic interference suppression and eliminates the need for wiring a separate filter to a power receptacle, thereby lowering the cost and improving the installation performance due to a reduction in stray wiring radiated susceptibility.

Electrical Schematic:



Specifications

Voltage rating:	115/250 VAC
Line frequency:	50/60 Hz
Leakage current: (line-to-ground*)	0.25 mA maximum at 115 V, 60 Hz 0.50 mA maximum at 250 V, 50 Hz
Test voltage:	Line to ground, 2250 VDC Line to line, 1450 VDC
Over-Current Test:	6 x rated current for 8 secs
Insulation Resistance:	6000Megohms at 100 VDC

Common Mode Performance

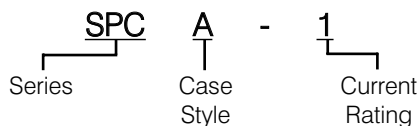
Current Rating	Frequency, MHz									
	0.01	0.02	0.05	0.15	0.5	1	5	10	20	30
1 A	20	24	30	40	50	60	60	60	50	50 (db)
3 A	5	10	20	30	35	45	55	60	50	50 (db)
6 A	3	6	10	18	25	35	45	50	50	50 (db)

Differential Mode Performance

Current Rating	Frequency, MHz									
	0.01	0.02	0.05	0.15	0.5	1	5	10	20	30
1 A	0	0	2	10	34	55	60	60	45	45 (db)
3 A	0	0	2	8	27	45	55	55	45	45 (db)
6 A	0	0	2	9	15	40	55	55	45	45 (db)

Minimum insertion loss in 50 ohm system per MIL-STD-220A.

How to define a part number:



SPC Series

Ordering Information

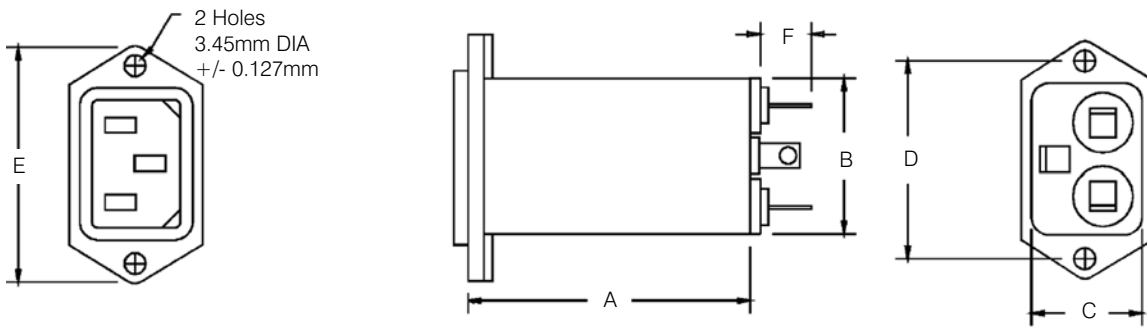
Current Rating	Part Number	Dimensions				
		A	B**	C	D	E
1 A	SPCA-1*	50.8	29.72	20.57	39.88	50.04
	SPCB-1*	50.8	29.72	20.57	39.88	50.04
3 A	SPCA-3*	50.8	29.72	20.57	39.88	50.04
	SPCB-3*	50.8	29.72	20.57	39.88	50.04
6A	SPCA-6*	50.8	29.72	20.57	39.88	50.04
	SPCB-6*	50.8	29.72	20.57	39.88	50.04

* For small solder lug termination, add the suffix "L", e.g. SPCA-1L (1.43mm Length)

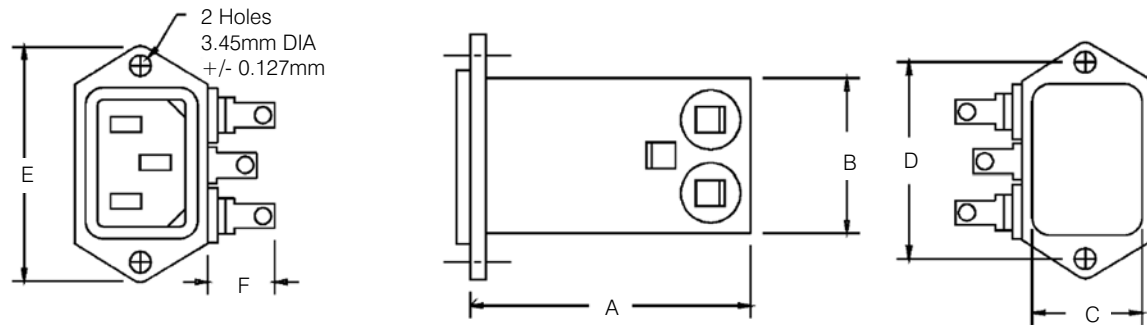
** B dimensions listed are maximums

F Dimensions defined as 0.250 Tab Terminals (14.73mm Length, hole diameter 1.98mm)

CASE STYLE A:



CASE STYLE B:



PANEL CUT-OUT:

