

STE Series

Switching Transient Filters



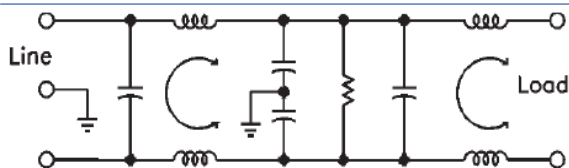
UL File No. E62459
 CSA File No. LR49272
 TUV File #R30001
 VDE File #51473



Applications

The STE series of EM filters are designed to reduce equipment interference effectively to help meet VDE 0871/0875 requirements. These filters reduce switching transients to acceptable levels by combining common and differential mode rejection characteristics and by providing optimum performance at minimum leakage current.

Electrical Schematic



How to define a part number:

STE
Series

3
Case
Style

-

3
Current
Rating

Specifications

Voltage rating: 115/250 VAC
Line frequency: 50/60 Hz
Leakage current:* 0.25 mA maximum at 115 V, 60 Hz
 (line-to-ground) 0.50 mA maximum at 250 V, 50 Hz
Test voltage: Line to ground, 2250 VDC
 Line to line, 1450 VDC

Common Mode

Models	Frequency (MHz)							
	.01	.05	.15	.2	.5	10	20	30
All	1	10	58	60	65	60	57	55 (dB)

Differential Mode

Models	Frequency (MHz)							
	.01	.05	.15	.2	.5	10	20	30
All	1	4	36	50	65	65	55	50 (dB)

Minimum Insertion loss in 50 ohm system per MIL-STD-220A

STE Series

Ordering Information

Current Rating	Part Number	Dimensions (mm)				
		A	B	C	D	E
1	STE1-1	63.5	50.8	44.45	74.68	84.32
	STE2-1	63.5	50.8	44.45	74.68	84.32
	STE3-1	63.5	50.8	44.45	74.68	84.32
3	STE1-3	63.5	50.8	44.45	74.68	84.32
	STE2-3	63.5	50.8	44.45	74.68	84.32
	STE3-3	63.5	50.8	44.45	74.68	84.32
	STE7-3*	63.5	50.8	44.45	40.0	16.0
	STE8-3*	63.5	50.8	44.45	40.0	16.0

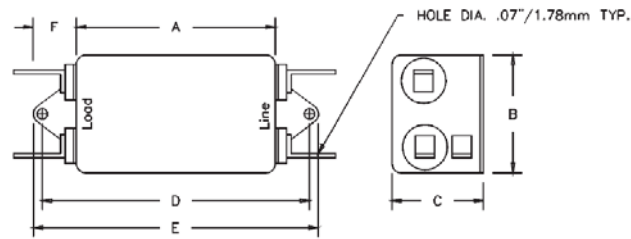
* To designate metric mounting, add the suffix "M" before the "-", eg: STE7M-3

0.250 Tab Terminals extend 14.73mm.
 8-32 x 0.67 Threaded Terminals extend 26.5mm (max).
 18 AWG wire leads extend 107.95mm (max).
 Mounting Hole Diameters are 4.78mm.

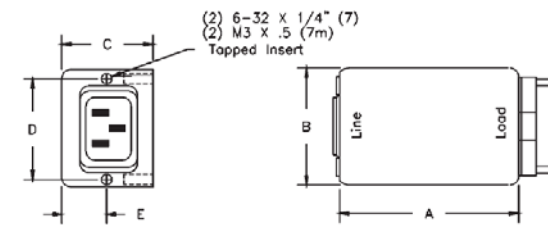
Ordering Information

Current Rating	Part Number	Dimensions (mm)				
		A	B	C	D	E
6	STE1-6	133.35	50.8	57.15	143.0	152.0
	STE2-6	133.35	50.8	57.15	143.0	152.0
	STE3-6	133.35	50.8	57.15	143.0	152.0
	STE7-6*	133.35	57.15	50.8	40.0	16.0
	STE8-6*	133.35	57.15	50.8	40.0	16.0
10	STE1-10	133.35	50.8	69.85	143.0	152.0
	STE2-10	133.35	50.8	69.85	143.0	152.0
	STE3-10	133.35	50.8	69.85	143.0	152.0
	STE7-10*	133.35	57.15	50.8	40.0	16.0
	STE8-10*	133.35	57.15	50.8	40.0	16.0

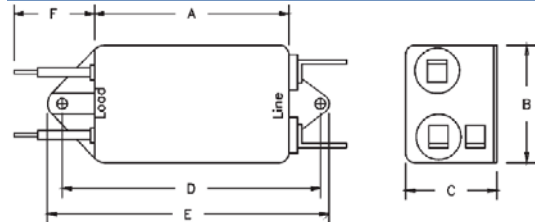
Style 1:



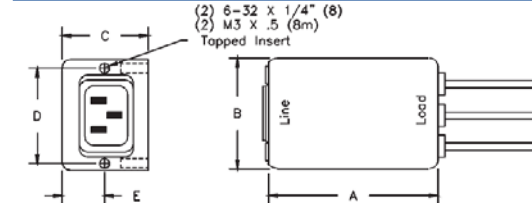
Style 7 or 7M:



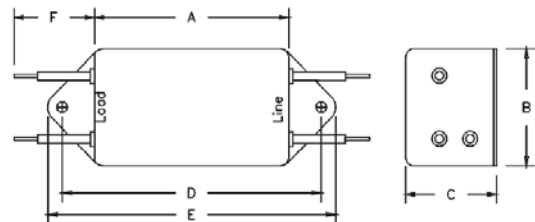
Style 2:



Style 8 or 8M:



Style 3



Panel Cutout

