

# STG Series

Switching Transient General Application Filters



UL File No. E62459  
 CSA File No. LR49272  
 TUV File No. R60226

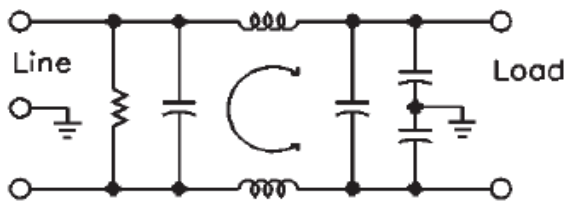


## Applications

The switching transient, general application filters (STG series) have significantly better low frequency performance than the SPGA series. These filters are designed to provide greater reduction of conducted interference to meet acceptable limits of both FCC and VDE specifications with greater margins and, in some cases, may replace the STE series' performance at less expense.

The switching transient general application filters meet the leakage requirements of VDE and SEV portable equipment and IEC 2601 (120-volt) nonpatient medical equipment.

## Electrical Schematic



## How to define a part number:

**STG**  
Series

**3**  
Case  
Style

-

**3**  
Current  
Rating

## Specifications

**Voltage rating:** 115/250 VAC  
**Line frequency:** 50/60 Hz  
**Leakage current:\*** 0.50 mA maximum at 115 V, 60 Hz  
 (line-to-ground) 1.00 mA maximum at 250 V, 50 Hz  
**Test voltage:** Line to ground, 2250 VDC  
 Line to line, 1450 VDC  
**Overload Test:** 6x rated current for 8 secs  
**Insulation Res.:** 6000 megaohms at 100 VDC

\* Low leakage models (<0.5ma @ 250 VAC/50Hz) may be ordered by using the prefix L on part number, e.g. LSTG1-1

## Common Mode

Models	Frequency (MHz)										
	.01	.02	.05	.10	.15	.50	1.0	5.0	10	20	30
All	18	23	30	38	43	47	45	44	40	45	37 (dB)

## Differential Mode

Models	Frequency (MHz)										
	.01	.02	.05	.10	.15	.50	1.0	5.0	10	20	30
All	3	4	18	40	50	70	70	62	50	50	50 (dB)

Minimum Insertion loss in 50 ohm system per MIL-STD-220A

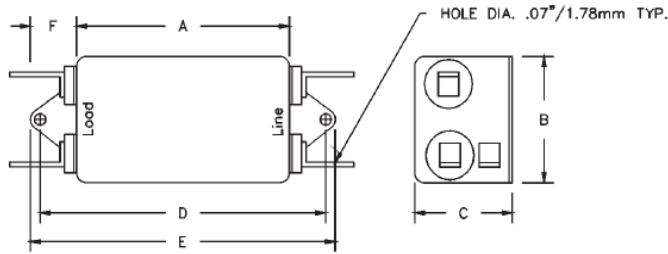
# STG Series

## Ordering Information

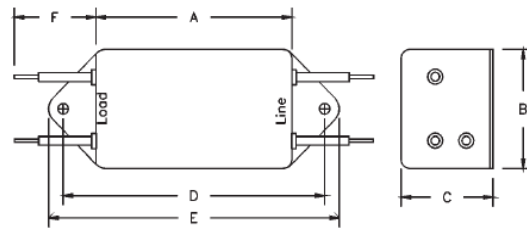
Current Rating	Part Number	Dimensions (mm)				
		A	B	C	D	E
1	STG1-1	63.5	50.8	28.7	74.68	84.32
	STG3-1	63.5	50.8	28.7	74.68	84.32
	STG7-1	76.2	55.63	31.75	40.0	16.0
	STG8-1	76.2	55.63	31.75	40.0	16.0
3	STG1-3	63.5	50.8	44.45	74.68	84.32
	STG3-3	63.5	50.8	44.45	74.68	84.32
	STG7-3	76.2	55.63	44.45	40.0	16.0
	STG8-3	76.2	55.63	44.45	40.0	16.0
6	STG1-6	63.5	50.8	44.45	74.68	84.32
	STG3-6	63.5	50.8	44.45	74.68	84.32
	STG7-6	76.2	55.63	44.45	40.0	16.0
	STG8-6	76.2	55.63	44.45	40.0	16.0

0.250 Tab Terminals extend 14.73mm.  
 18 AWG wire leads extend 107.95mm (max).  
 Mounting Hole Diameters are 4.78mm.

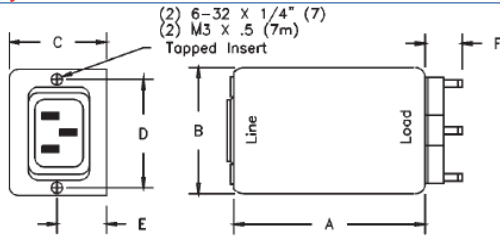
### Style 1



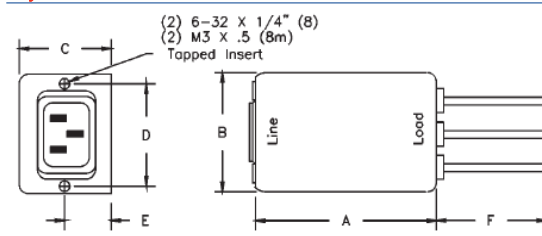
### Style 3



### Style 7 or 7m



### Style 8 or 8M



### Panel Cutout

